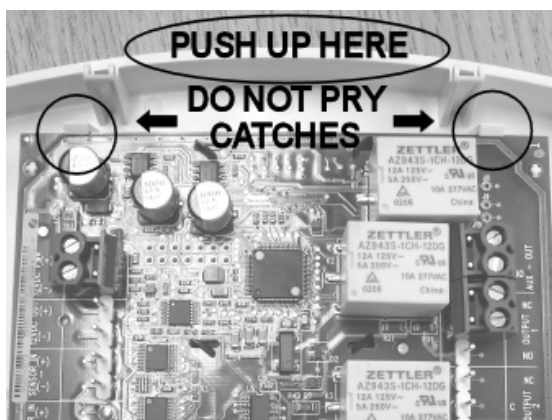
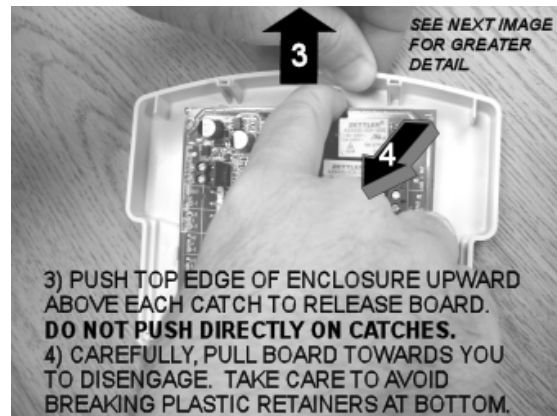
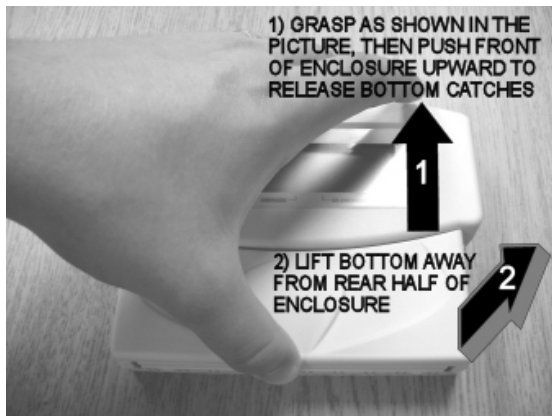


EnviroAlert™ Circuit Board Replacement and Reprogramming (For Wall-Mounted Installations)

BEFORE YOU BEGIN...

1. Before removing power, record all user-defined programming variables for each zone, such as: sensor type, high and low limit settings, delay settings, and relay state.
2. Disable security panel and/or other devices connected to EnviroAlert™ to avoid nuisance alarms.
3. Label all wiring before disconnecting to ensure that the new board gets rewired correctly.



Reverse procedure to install new board. **Do NOT force new board against catches when installing.** Instead, push top edge of enclosure up while pushing board down. Flip cover must be attached to *front* enclosure before attaching to back panel.

Unlocking and Setting Time and Date

1. Simultaneously press and release the ALARM SILENCE and ENTER keys. The Unlocked icon appears.
2. Press the TIME/DATE key. The Hours display appears.
3. Scroll to the correct hour by using the INCREASE or DECREASE keys, then press the ENTER key.
4. Enter the remaining data (minutes, AM/PM, year, month, day) in the same manner as in Step 3.

Programming the Zones

1. Press the ZONE key. The Zone display appears.
2. Scroll to the Zone to be programmed (flashing) by using the INCREASE or DECREASE keys, then press the ENTER key. (**NOTE:** For EA200, Zone 1 is the on-board temp sensor. Remote probes must use Zone 2.)
3. Enter the remaining data (sensor type, high limit, low limit, delay time in minutes, relay state) in the same manner as in Step 2. (**NOTE:** If relay is set to ENERGIZE, contact outputs are opposite from what is shown on the circuit board.)
4. Place the supplied blue dot on the inside of the flip cover. This will help tech support identify your upgrade.

As stated in the EnviroAlert™ Owner's Manual, **your alarm system should be tested weekly to make sure all detection devices are working properly.**

The EnviroAlert™ Owner's Manual can be downloaded at www.winland.com
Winland technical support can be reached at 1-800-635-4269 or 1-507-625-7231