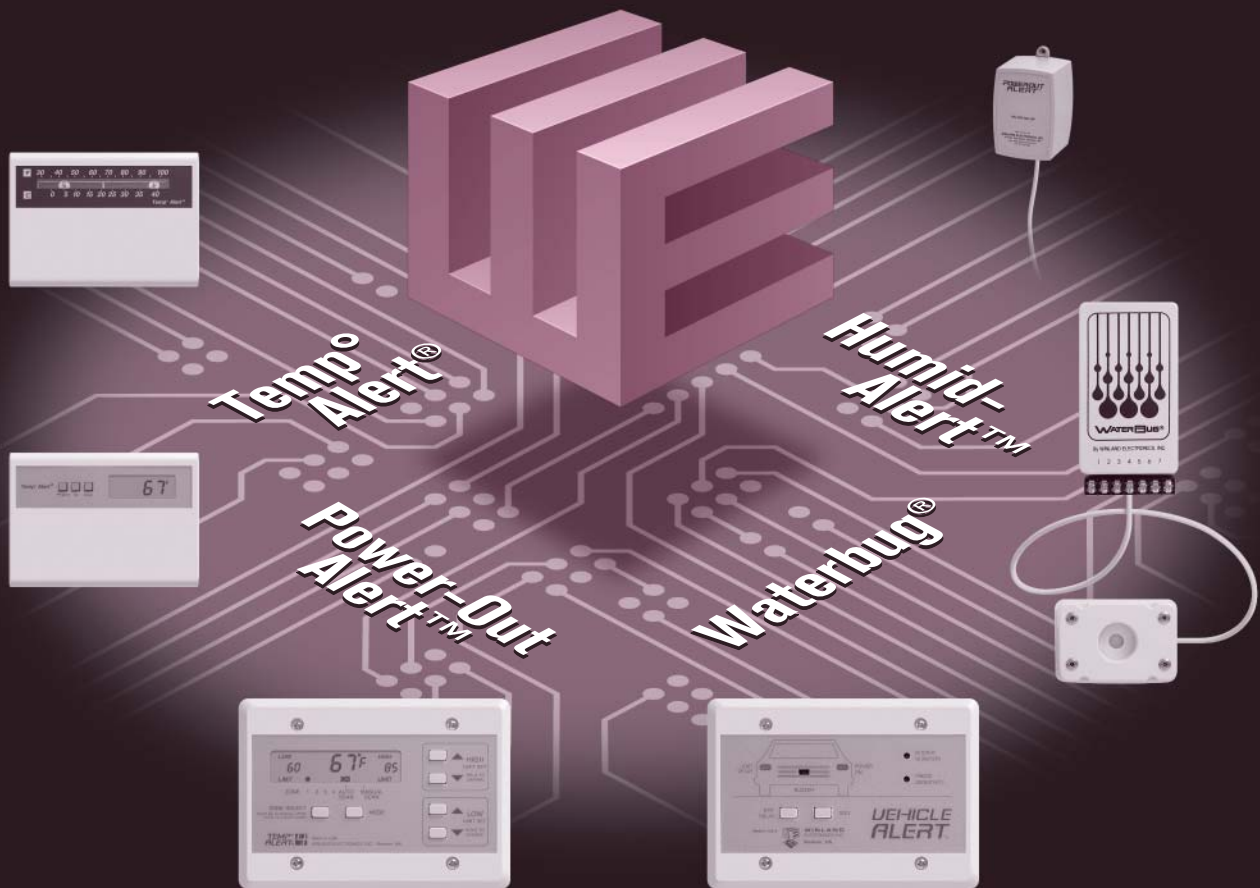


SENSORS & ALARMS FOR ENVIRONMENTAL SECURITY®



TEMPERATURE, POWER FAILURE,
WATER LEAKAGE & HUMIDITY PROTECTION



WINLAND
ELECTRONICS, INC.



Don't let the environmental "Nasties" damage your property. Protect yourself with Winland Environmental Security® products.

WINLAND ELECTRONICS

Your Environmental Security® Specialists for Over 20 Years.

Our goal is to provide our customers with TOTAL SECURITY. What good is a security system which is only half complete? Don't fall into the trap of protecting your facility with only burglary or fire protection. Property losses due to environmental hazards far exceed those of fire and burglary.

Winland designs and manufactures products which provide the key missing pieces to complete your facilities security system. Winland's products protect against unfavorable temperatures, improper humidity, water leakage, and power failures. In addition, Winland markets a complete driveway warning system for announcing the arrival of vehicles onto any driveway or roadway. With the optional modules the Vehicle Alert™ can activate indoor/outdoor lighting, door bells, surveillance cameras, horns, and more.

Control Losses

The environment can rob you, just as any burglar can, by causing damaged or ruined inventory, damaged facilities, expensive clean-ups, lost records, safety hazards, and insurance rate hikes. Effective loss prevention is the key to any successful security program. Winland's economical TEMP°ALERT®, HUMID-ALERT™, WATERBUG®, POWER-OUT ALERT™, and VEHICLE ALERT™ connect in minutes to any hardwire or wireless security system. Just how economical are these products?

Think Of The Possibilities

Use the extra unused zones on your alarm panel to connect the ALERT series of products from Winland. In minutes your SECURITY COVERAGE can more than DOUBLE. Any alarm system with remote notification can now be converted into a 24-hour guard for temperature, humidity, water, and power failure problems.

Want To Get Started?

Call us today to get started. If you wish, your name will be added to our computerized mailing lists so that you will receive free brochures and notification of new Winland products and accessories as they become available. Also, if you have technical questions or require assistance, please call this outstate toll free number: **(800) 635-4269**. In MN: **(507)-625-7231**. Visit our website at **www.winland.com**



TEMP° ALERT®

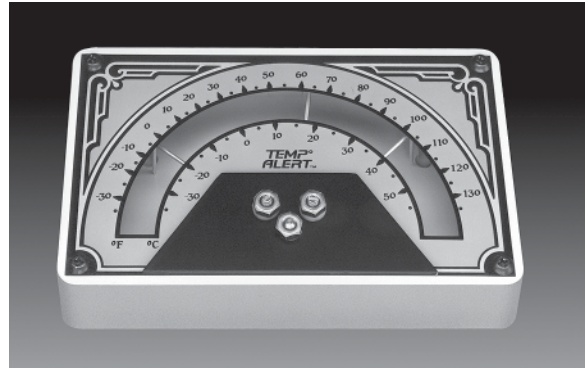
Powerless Operation for Controlled Climates

TA-2HL (PN 1039)

Add reliable and economical temperature protection to your residential or commercial security system with Temp°Alert® models TA-1 and TA-2HL. These units are designed to be used anywhere the monitoring of high and low temperature limits is critical. Both models measure temperatures from -30° to +130°F (-34° to +54°C). Simply select an acceptable temperature range by setting the adjustable high and low limits. If temperatures in the monitored area rise above or fall below the set limits, the temperature indicator contacts one of the preset limit arms providing a dry contact closure, which like a switch can be used to turn on an existing alarm panel, telephone communicator, or wireless alarm system.

The Temp°Alert® model TA-2HL is a special version which will enable you to separately zone out high and low temperature alarm signals. The TA-2HL has a sleek 1" profile and custom graphics which make it ideal for placement in residential homes, businesses, or other settings where a highly professional appearance is important. In addition, the unit's 15' length of signal cable exits through the back panel so that no wires are visible when the installation is complete. Both units can monitor high or low temperature limits. By wiring several Temp°Alerts® in parallel, it is possible to monitor temperatures in an entire complex.

Important: Mount a Temp°Alert on every level of the home or business to adequately protect against freezing (Do not use TA-1 or TA-2HL for freezer or cooler monitoring. Instead use an electronic Temp°Alert®).



TA-1 (PN 1014)



TEMP°ALERT® IS IDEAL FOR TEMPERATURE MONITORING IN:

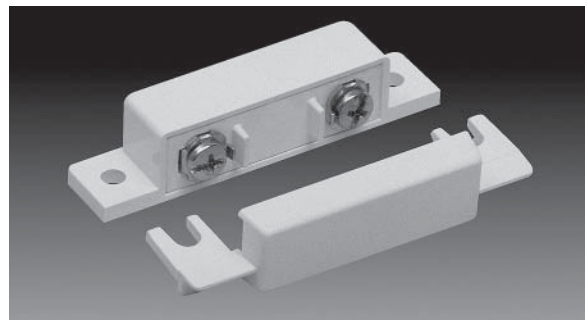
- Computer Rooms
- Residential Homes
- Greenhouses
- Animal Buildings
- Unattended Buildings

FIXED TEMP° ALERT®

The Perfect Solution for Low-Cost Protection

TA-40 (PN 1100)

The TA-40 fixed temperature switch is the perfect solution for simple low cost protection in homes, mountain cabins, or any unattended building. The unit will activate a hardwire or wireless alarm system if the temperature should fall below 39°F. The TA-40 provides positive protection and peace of mind to residential and business property owners concerned about the risk of frost shattered pipes and the water damage that follows. An added advantage is the unit's compact size which enables it to be installed in virtually any setting without being noticed. Above 40° F normally closed and below 40° F normally open.



Mount a TA-40 on each level of a home or business to adequately protect against freezing.

FOUR ZONE TEMP^o ALERT[®]

Monitor Four Locations With A Single Unit

Precise **temperature** and **humidity** monitoring just got better. The DPM-4 provides two zones of temperature and two zones of humidity monitoring (10% to 90% RH). The DTA-4 provides four zones of temperature only monitoring (-67° to +300°F or -55° to +150° C). This is the only major difference between the two. If temperatures or humidity rise above or fall below your preset limits, both units provide up to 4 SPDT relay outputs to activate alarms, dialers, transmitters, etc.

Note: Temperature & humidity probes ordered separately - see accessories panel on next page.

ADDITIONAL FEATURES INCLUDE:

- Four (4) SPDT relay outputs plus the programming of separate high/low alarm limits for each zone!
- Supervised sensor lines at any length up to 500' away from console.
- Limits Lock for tamper-proof limit settings.



DPM-4 (PN #1180 - 4 zones Temp. and Humidity)
DTA-4 (PN #1105 - 4 zones temperature only)

- Alarm Latch for auto or manual clearing of zones.
- With accessory modules & sensors monitor freezers with defrost cycles and liquids.

SINGLE ZONE TEMP^o ALERT[®]

Low-Cost Temperature Monitoring Solution

The TA-2HLD & TA3-HLD are the low cost solutions for precise temperature monitoring, and they help stop false alarms in hard-to-monitor applications such as freezers with defrost cycles. Both include a **Time Delay Module** (0 to 99 minutes) which postpones the relay output until the timer has expired. The TA-3HLD includes a built-in **Audible Alarm** with manual **Alarm Silence Feature** to suspend the audible alarm (but not the relays) for 10 minutes. Both include a built-in temperature sensor (+32° to +130°F). Optional temp. probes available for extreme temperatures (-67° to +300° F) & remote sensing. If temperatures rise above or fall below your preset limits, the unit's two SPDT relay outputs will activate an alarm, dialer, etc.

ADDITIONAL FEATURES INCLUDE:

- Defrost Cycle Timer - adj. delay 0 to 99 minutes
- Separate Hi & Lo set points. Displays in °F or °C.
- Audible Alarm with 10 minute Silence Timer (TA-3HLD only)
- Both include a built-in temp. sensor (+32° to +130° F).
- "HI" or "LO" messages appear in LCD display and the temperature reading flashes during an alarm condition.



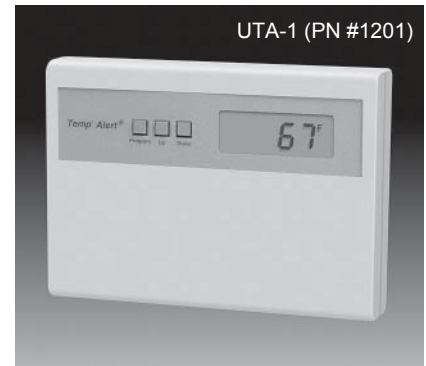
TA-2HLD (PN #M-001-0001)
TA-3HLD (PN #M-001-0002)
(Both now include a built-in Temperature Sensor.)
(Do not mount in cooler or freezer, use remote sensor.)

- Programming retained in memory if power is lost.
- Limits Lock for tamper proof settings
- Run Temp. probe up to 500' from control console.
- Power Options: 12 VDC, 12 VAC, 24 VDC & 24 VAC

MICRO TEMP^o ALERT[®]

Accurate & Compact for Residential Use

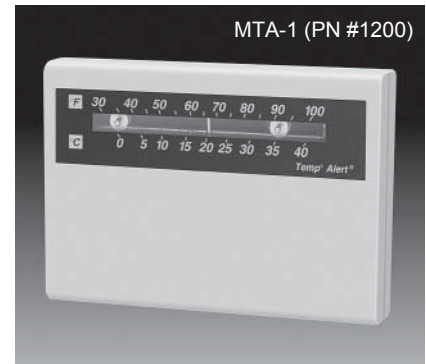
The UTA-1 combines a professional appearance along with powerful features. Such as a built-in Time Delay (0 to 99 minutes), built-in temperature sensor, dual relay outputs, plus the ability of remote monitoring (up to 500' away) with Winland's optional probes. Set your HI and LO temp. limit anywhere from -67° to + 300° F. If this limit is exceeded the unit will generate a relay output which will activate alarms, dialers, etc. Will display in °F or °C. 12 VDC.



MECHANICAL TEMP^o ALERT[®]

Classic Styling & Reliable Mechanical Design

- Best Looking Temp^oAlert[®] in Its Class!
- Connects to Any Hardwire or Wireless Alarm for 24-hour Protection
- Requires no Power to Operate
- Adjustable High and Low Alarm Set Points to activate alarms, bells, etc.
Range: 30° to 100° F (-1° to 38° C)



DIGITAL TEMP^o ALERT[®]

Bright LED Display for Low-Light Conditions

The Digital Temp^oAlert[®] monitors temperatures from 32° to +130°F with its built-in probe, and -67° to +300°F (-55° to +150°C) with optional probes. If temperatures in the monitored area rise above or fall below your preset limits, the unit will provide a SPDT relay output to activate alarms, dialers, etc.

- Remote probe up to 500' from console
- Displays in °F or °C
- Comes std. with the temp. probe #1045



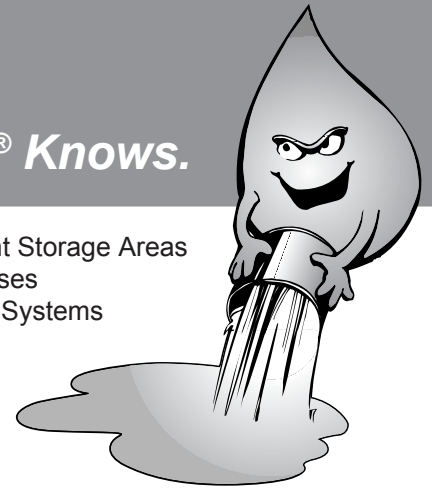
DIGITAL TEMP^o ALERT[®] ACCESSORIES

PART #:	CONNECTS TO:	DESCRIPTION (operating temperature) accuracy ±F (±C) :
N/A	TA-2HLD, TA-3HLD, UTA-1	Built-in Temp. Sensor (+32° to +130°F) ±3°F (±1.8°C)
1106 (1045)	All Units (DTA-1)	Standard Temperature Sensor for Dry indoor uses (-13° to +220°F) ±2°F (±1.1°C)
1107 (1024)	All Units (DTA-1)	Low Temperature Sensor for Freezers/coolers, etc. (-67° to +220°F) ±2°F (±1.1°C)
1108 (1025)	All Units (DTA-1)	High Temperature Sensor For Dry & Hot areas (-67° to +300°F) ±2°F (±1.1°C)
1109 (1026)	All Units (DTA-1)	Liquid Temperature Sensor All of above plus liquids (-67° to +300°F) ±2°F (±1.1°C)
M-001-0014	TA-2HLD, TA-3HLD, UTA-1	Sub-Zero Temperature Sensor (-120° to +32°F) ±0.5°F (±0.25°C)
1109A	All Units Except DTA-1	1/2" NPT Threaded Temp. Sensor (-67° to +300°F) ±0.5°F (±0.25°C)
1128	All Units Except DTA-1	Humidity Sensor HA-3 (5% to 95% R.H.) ±5% R.H.
1181	DPM-4	Humidity Sensor HA-2 (10% to 90% R.H.) ±5% R.H.
1175	TA-2HLD, TA-3HLD	Audible Alarm Module – 12 VDC @ 8mA
1183	DTA-4, DPM-4	Audible Alarm Module – 5 VDC @ 3mA
1110	All Units Except DTA-1	3 Gang surface mounting box – ABS Plastic
L-018-0001	All Units Except DTA-1	3 Gang surface mounting box – Metal
1193	DTA-1, DTA-4 & DPM-4	Accessory Time Delay Module

When Destructive Water Flows... WaterBug® Knows.

WATERBUG® IS IDEAL FOR USE WITH OR AROUND:

- Basement Sump Pumps
- Document Storage Areas
- All Drain Areas
- Warehouses
- Computer Rooms
- Sprinkler Systems



WATERBUG®

The Classic Moisture Detection System

Winland offers four WaterBug® models – the WB-100 (stand alone with audible output only) the WB-200 (hardwire version, shown) the WB-350 (powered by 9v battery) and the WB-800 (below). All models will notify you of leaks before they become big floods. The WB-100 monitors a single location for water and is powered by a 9 volt battery with a low battery warning. The WB-200 can be used in conjunction with an alarm panel, bell, etc. The WB-350 can be used where no power is available. As many as 6 sensor probes can be run up to 100 feet away from either the WB-200 or WB-350. Each sensor probe has 2 contacts. A film of water forming a bridge between these 2 contacts is all that is needed for an alarm condition. The sensor will not alarm due to condensation or high humidity. The WB-200 and WB-350 include one standard surface sensor. Both the WB-200 and WB-350 can be used with a wireless transmitter.

ACCESSORIES:

- Additional Standard Sensors (PN 1040)
- Additional Under Carpet Sensors (PN 1041)

EIGHT ZONE WATERBUG®

Flexible Moisture Intrusion Monitoring

- SPDT Relay Output.
- Eight LED's to identify which sensor is in alarm.
- Built-in audible alarm with audible silence feature.
- Supervised sensor line option with up to 8 sensors.
- Up to 16 unsupervised sensors can be connected.
- Accepts 12, 24 VAC or 12, 24 VDC.

ACCESSORIES:

- Additional Standard Sensor – supervised (PN M-001-0006)
- Additional Standard Sensor – unsupervised (PN 1040)
- Additional Under Carpet Sensor – unsupervised (PN 1041)



WB-100 (PN 1046)
SHOWN: WB-200 (PN 1043)
WB-350 (PN 1047)



WB-800 (PN #M-001-0005)

HUMID-ALERT™

Economical Humidity Monitoring

Winland's Humid-Alert™ model HA-1 is a humidity monitoring device. It utilizes a nylon banded sensing element which monitors humidity throughout a range of 20% to 80% R.H. The Humid-Alert™ provides a single high or low set point. As soon as this set point is met or exceeded the units SPDT micro-switch will activate alarm systems, controls, digital communicators, etc.

HUMID-ALERT APPLICATIONS INCLUDE:

- Computer Rooms
- Energy Mgt. Systems
- Office Areas
- Museums
- Document Storage
- Greenhouses



HA-1 (PN 1190)

POWER-OUT ALERT™

Low-Cost Temperature Monitoring Solution

If you rely on electricity for the operation of essential equipment in your business or home, a power failure can mean much more than an inconvenience. Gone undetected, a power outage may cause extensive loss to property and a costly clean-up. The Power-Out Alert™ by Winland is a compact, easy-to-use monitor that simply plugs into any outlet on the (110 VAC) circuit needed to be monitored. By using two (2) Power-Out Alerts, you can monitor 220 VAC. The unit has an attached 15' cord that wires into any alarm panel, telephone communicator, or wireless transmitter. When power to the monitored circuit is interrupted for 3 to 8 consecutive minutes, Power-Out Alert™ closes to provide a dry contact output. This time delay feature **ELIMINATES NUISANCE ALARMS** due to momentary power outages.

POWER-OUT ALERT APPLICATIONS INCLUDE:

- Residential Homes
- Computer Rooms
- Supermarkets



PS-110 (PN 1022)

VEHICLE ALERT™

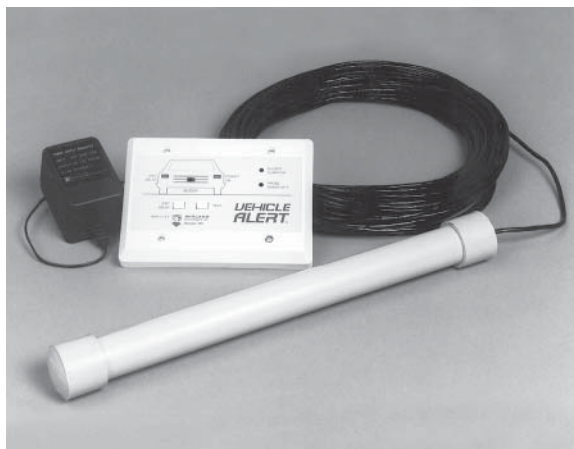
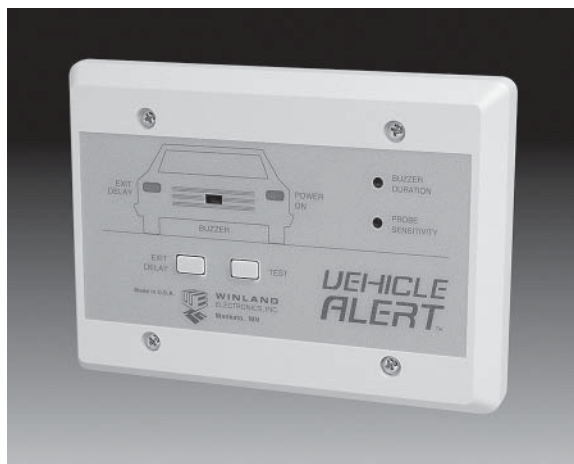
Driveway Warning System

Automatic activation of yard lights, doorbells, surveillance cameras . . . whenever a vehicle enters into your driveway! You will never have to walk into a dark house again...The Vehicle Alert™ can "turn on" your house lights automatically once you enter your driveway.

You're alone at night and suddenly, without warning, someone knocks at your front door. "Who is it"? It could be a friend or relative -- but then again it could be...who knows? You can now avoid this type of frightening situation with the new Vehicle Alert™ System. Don't be caught by surprise again because the Vehicle Alert™ will sound an electronic alarm whenever a vehicle enters your property. Perfect for people who want low-cost protection for their homes, business, farms, etc...To install, simply bury the probe 6-8" underground beside your driveway and run the wire back to your house, then mount the console inside wherever you wish. The probe and wire are weatherproof.

ADDITIONAL FEATURES INCLUDE:

- Two auxiliary Form A relays for switching on lights, alarms, cameras, bells, X-10, etc.
- Probes available with 10', 100', 200', 350', 500' & 1000' lengths of cable. Max. run is 2,500'.
- Adjustable probe sensitivity and built-in audible alarm.
- Use up to two underground sensor probes.
- Additional audible alarm modules (Part #1175). Will sound an audible alarm in a location away from the control console.
- Six minute exit delay allows a vehicle to leave without activating the system.



The Complete Vehicle Alert System: Control Console, Probe & 100' Cable, & Transformer
VAL-1 (PN # 1172)



Remote Annunciator
PN 1175 (12 VDC)

SPECIFICATIONS	DTA-1	DTA-4 & DPM-4	TA-2HLD & 3HLD & UTA-1	TA-1/TA-2HL & MTA-1	HA-1	HA-2 & HA-3
STANDARD SENSOR PROBE	-13° to +220°F (-10° to +105°C)	-13° to +220°F (-10° to +105°C)	-13° to +220°F (-10° to +105°C)	-30° to +130°F +30° to 100°F (MTA-1)*	20-80%RH	10-90%RH
PART # TO ORDER	PN #1045	PN #1106	PN #1106	PN #1014,1039, *1200	PN #1190	PN #1181 & 1128
LOW TEMP/MOISTURE RESISTANT PROBE	-67° to +220°F (-55° to +105°C)	-67° to +220°F (-55° to +105°C)	-67° to +220°F (-55° to +105°C)	N/A	No probe needed	N/A
PART # TO ORDER	PN #1024	PN #1107	PN #1107			
HIGH TEMP PROBE	-67° to +300°F (-55° to +150°C)	-67° to +300°F (-55° to +150°C)	-67° to +300°F (-55° to +150°C)	N/A	No probe needed	N/A
PART # TO ORDER	PN #1025	PN #1108	PN #1108			
SEALED STAINLESS STEEL LIQUID TEMP. PROBE	-67° to +300°F (-55° to +150°C)	-67° to +300°F (-55° to +150°C)	-67° to +300°F (-55° to +150°C)	N/A	No probe needed	N/A
PART # TO ORDER	PN #1026	PN #1109	PN #1109			
CONTROL UNIT TEMP RANGE	+32° to +130°F (0° to +54°C)	+32° to +130°F (0° to +54°C)	+32° to +130°F (0° to +54°C)	-30° to +130°F (-34° to +54°C)	60° to 90°F (15° to 32°C)	30° to 140° (-1° to 60°C)
	<i>Must locate console in a dry, frost-free environment</i>			<i>For MTA-1 see below: 30° to 100° F (-1° to 38° C)</i>		
LOW LIMIT ADJUST RANGE*		Sensor Dependent		-30° to +90°F (-34° to 30° C) 30° to 90° F (MTA-1)		N/A
HIGH LIMIT ADJUST RANGE*		Sensor Dependent		-10° to 130° F (-12° to 54° C) 40° to 100° F (MTA-1)		N/A
RECOMMENDED SENSOR CABLE		18 - 24 AWG twisted pair (shielded or unshielded)		18 - 22 AWG three wire (TA-2HL & MTA-1) two wire (TA-1)		18-22AWG three wire
MINIMUM SPAN (Rec. dist. between high & low set pts.)	4°F (2.5°C)	2°F (2°C)	4°F (2.5°C)	10°F (6°C)		N/A
TEMP/RH RESPONSE TIME (In well stirred air & no filter)		Sensor Dependent		TC=14 minutes*	TC=12 min*	TC<1min*
TEMP/RH SENSING ELEMENT		Linear temperature transducer		Bimetallic coil	Nylon band	Capacitive/IC
OUTPUT(S) (Not for high voltage use)	(1) SPDT relay	(4) SPDT relays	(2) SPDT Relays UTA-1 (2) SPST	Gold plated N/O Dry Contacts	SPDT switch	N/A
CONTACT OUTPUT RATING		1 AMP @ 30 VDC - not for direct high voltage switching		12VDC @ 50mA	50 VA @ 24VAC	N/A
TRANSISTOR OUTPUTS	N/A	100 mA @ 12 VDC	N/A	N/A		N/A
INPUT VOLTAGE REQUIREMENTS	8 to 14 VDC @225mA 8-14 VAC 50-60 HZ @ 10 VA minimum	12 to 14 VDC <200 mA	TA-2HLD & 3HLD 12, 24 VAC RMS @ 125 mA RMS 12, 24 VDC @ 75 mA	N/A	N/A	12 VDC @ 5mA
CONTROL BOX MATERIAL	ABS	ABS	ABS	ABS		ABS
WEIGHT	13.6 ounces	8 ounces	8 ounces	12 ounces 6 ounces (MTA-1)	8 ounces	5 ounces
DIMENSIONS	6.25"x3.75"x2"	6.55"x4.70"x1"	6.55"x4.70"x1" 4.50"x3.25"x1" (UTA-1)	6.25"x3.75"x2" or 1" 4.50"x3.25"x1" (MTA-1)	5"x3.18"x2.43"	3"x 2"x1.75"
MOUNTING	Key slot	Surface mt. or use 3-gang box (#1110) 3 gang surface mount box		Keyslot (TA-1 & TA-2HL) Surface mt. (MTA-1)		Surface Mount

*TC = Time required to reach 63% of the temperature being monitored. Five time constants are required to reach 99% of the full reading

MODEL #'S			WB-200		WB-350		SPECIFICATIONS		VEHICLE ALERT		
MODEL #			VAL-1								
CONSOLE SIZE			5" x 2.44" x 1.25" (12.7 cm x 6.2 cm x 3.2 cm)				VEHICLE ALERT SYSTEM (Console, probe, 100' cable & transformer)				
PART # TO ORDER			PN #1043		PN #1047		PART # TO ORDER		PN #1172		
PROBE SIZE (standard)			2" x 3" x .88" (5.1 cm x 7.6 cm x 2.2 cm)				POWER REQUIREMENTS		Regulated 10-14 VDC @ 100 mA		
PART # TO ORDER			PN #1040								
PROBE SIZE (under carpet)			2" x 3" x .18" (5.1 cm x 7.6 cm x .46 cm)				CURRENT DRAW (No accessories)		40 mA (resting) 70 mA (alarm)		
PART # TO ORDER			PN #1041								
POWER REQUIREMENTS*			12, 24 VDC @ 35 mA 12, 24 VAC @ 100 mA RMS *Jumper selectable		9 VDC via alkaline battery (not included)		BUZZER DURATION		1 to 18 seconds		
CURRENT DRAW RESTING STATE			3.5 mA @ 12 VDC		1.8 microamperes		SOUND PRESSURE LEVEL OF BUZZER		88 db min. @30 cm @ 12 VDC		
CURRENT DRAW ALARM CONDITION			35 mA @ 12, 24 VDC 100 mA at 12, 24 VAC		380 microamperes		EXIT DELAY		Fixed @ 6 minutes		
SENSITIVITY			Will not alarm due to high humidity or condensation				Auxiliary		2 SPST Relay outputs to activate Winland acc. modules Contact Rating: 500 mA		
APPROXIMATE BATTERY LIFE			N/A		1 year		CONSOLE SIZE (32° to 130° F)		6.55" x 4.70" x 1" (166 cm x 119 cm x 25 cm)		
OPERATING TEMPERATURE			Control & Probe 32° to 140°F (0° to 60°C)				SHIPPING WEIGHT		5.8 pounds (2.63 Kg)		
OUTPUTS			Form "C" contacts (SPDT) 1 Amp @ 24 VAC, resistive 1 Amp @ 30 VDC, resistive		Open collector Max. to tripline: 30VDC Max. collector: 25 mA		CABLE TYPE		Direct burial 22 AWG shielded twisted pair with ground wire		
RECOMMENDED MAXIMUM DIST. BETWEEN PROBES & CONSOLE			1 - 2 Probes (Max. 200 feet) 3 - 6 Probes (Max. 100 feet per probe)				MAXIMUM NUMBER OF PROBES		Two		
RECOMMENDED MAXIMUM PROBES PER CONSOLE			Six				MAXIMUM CABLE LENGTH		2500 ft. (762.5 meters)		
ALARM CONSOLE MOUNTING							ALARM CONSOLE MOUNTING		Mounts to 3-gang electrical box		
SPECIFICATIONS			POWER-OUT ALERT			SPECIFICATIONS CONTINUED					
MODEL # (PART #)			PS-110 (1022)			COLOR			Beige		
SIZE			2.25" x 2" x 3" (5.7 cm x 5.1 cm x 7.6 cm)			CONTACT RATINGS			0.5 Amp @ 30 VRMS		
SHIPPING WEIGHT			9.3 ounces (.26 Kg)			TIME DELAY*			1 - 6 minutes		
APPLICATION			Any std. 2 or 3 blade 110 volt outlet			*OPERATING TEMPERATURE RANGE			40° to 100°F (4.5° to 37.75°C)		
MOUNTING			Std. eyelet and included mounting screw								

REMOTE ANNUNCIATOR MODULE

FOR TA-2HLD & 3HLD / DTA-4 / DPM-4 / VAL-1

APPLICATION	Auxiliary audio output FOR TA-2HLD & 3HLD & VAL-1 BZ-1 (PN #1175) FOR DTA-4 / DPM-4 BZ-5 (PN #1183)
CONSOLE SIZE	4.5" x 2.75" x .225" (11.43 x 6.99 x .571 cm)
POWER REQ.	BZ-1 (12 VDC @ 8 mA) BZ-5 (5 VDC @ 3mA)
SOUND OUTPUT	2800 Hz ± 15% cont.
SOUND PRESSURE LEVEL AT 1 FOOT	BZ-1 @ 12 VDC - 90 db BZ-5 @ 5VDC - 84 db
OPER. TEMP. RANGE	-40° to 176° F (-40° to 80° C)
MOUNTING	Mounts to a standard 1 gang switch box

UNIVERSAL RELAY MODULE

FOR ALL WINLAND PRODUCTS

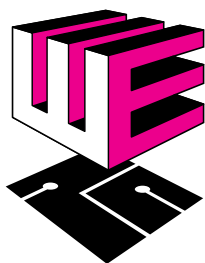
APPLICATION	Provides relay for switching other devices
PART # TO ORDER	PN # 1176
PHYSICAL SIZE	3" x 2.5" x 1" (7.62 x 6.35 x 2.54 cm)
POWER REQ.	12 VDC Nom.(10-18 VDC) 35 mA @ 12 VDC
INPUT	Relay activated when power is applied
OUTPUT	1 SPDT relay @ 6 Amps @ 28 VDC or 300 VAC
OPER. TEMP. RANGE	-67° to 194° F (-55° to 90° C)
MOUNTING	Dual adhesive strips

UNIVERSAL TIME DELAY MODULE

FOR ALL WINLAND PRODUCTS

APPLICATION	Provides time delayed relay output
PART # TO ORDER	PN # 1193
PHYSICAL SIZE	3" x 2.5" x 1" (7.62 x 6.35 x 2.54 cm)
POWER REQ.	12 VDC Nom.(10-18 VDC) 4mA Stdby & 31 mA Energized @ 12 VDC
TRIGGER INPUT	NO or NC
TIMER ADJUSTMENT	3 Seconds to 150 minutes
OPER. TEMP. RANGE	+32° to 130° F (0° to 54° C)
RELAY OUTPUT	1 SPDT, 6 Amp @ 28 VDC or 300 VAC
MOUNTING	Dual adhesive strips
SHIPPING WEIGHT	9.3 ounces (.26 Kg)

NOTE: Many products require 12 VDC to operate. Be certain not to overtax your power supply. A good rule is to use only 80% of the accessories power supply output current, or use a separate power supply.



**WINLAND
ELECTRONICS, INC.**

1950 Excel Drive
Mankato, MN 56001

1-800-635-4269

In MN: 507-625-7231
FAX: 507-387-2488

www.winland.com